

Question 3

[3]

Intervals:

(3 Minutes)

Play this interval (without giving a keynote). After about half-a-minute, play the interval again. Then give the other intervals in the same way.

Handwritten musical notation on two staves. The first staff shows a treble clef with a key signature of two sharps (F# and C#). It contains several intervals: a major second (D4-E4), a major third (D4-F#4), a major fourth (D4-G4), a major fifth (D4-A4), a major sixth (D4-F#5), and a major seventh (D4-G#5). Each interval is marked with a circled asterisk (*). The second staff shows a treble clef with a key signature of three flats (Bb, Eb, and Ab). It contains several intervals: a major second (D4-E4), a major third (D4-F4), a major fourth (D4-G4), a major fifth (D4-A4), a major sixth (D4-Bb5), and a major seventh (D4-Cb6). Each interval is marked with a circled asterisk (*).

Question 4

[3]

Cadence Recognition:

(5 Minutes)

Sound the tonic chord and play the whole passage *three times*, allowing an interval before each repetition. The candidate must recognize and name the cadences.

Handwritten musical score for a piano piece in 2/4 time, marked *Moderato*. The key signature is two sharps (F# and C#). The score consists of three systems of staves. The first system starts with a treble clef, a key signature of two sharps, and a tempo marking of *Moderato*. It includes a dynamic marking of *mf* and a first ending bracket. The second system includes a *Tast.* marking and a *Ped.* marking. The third system includes a *Tast.* marking, a *Ped.* marking, and a *rall.* marking. The score features various musical notations such as slurs, ties, and fingering numbers (1, 2, 4). A large red watermark "StudentSuvidha.com" is overlaid diagonally across the score.

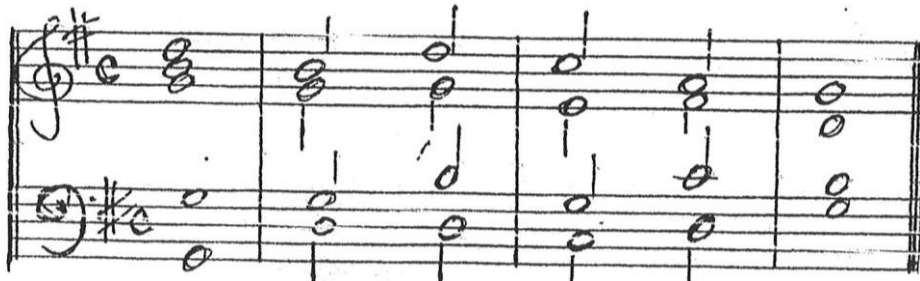
Question 5

[4]

Chord Recognition:

(5 Minutes)

Play the following progression *four times* at brief intervals. Each time, play the tonic chord followed by the progression. The candidate writes the whole progression.



Question 6

[4]

Modulations:

(5 Minutes)

Name the original key and sound its tonic chord. Play the example A twice. Sound the tonic chord again and play example B twice. Sound the tonic chord a third time and play example C twice. The candidate must name the key change

In addition to the above, candidates are to be evaluated as follows:

- Overall Assessment by Visiting Practical Examiner (Overall Aural skills, confidence of candidate, presentation of written work.) [5]
- Assessment of work done by the candidate during the year (to be assessed by the teacher.) [5]